

Mouse monoclonal antibody against CD45 (LCA) (Clone ISM145)

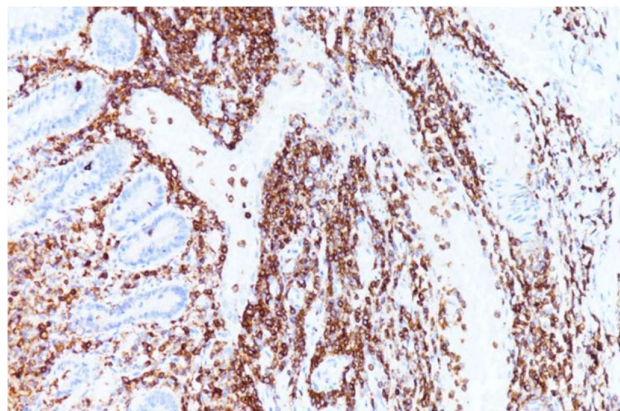


Figure 1 Human appendix stained with anti-CD45 (LCA) antibody.

Product identification

ISC139-R3	3 ml ready-to-use (RTU)
ISC139-R7	7 ml ready-to-use (RTU)
ISC139-C02	0.2 ml concentrated
ISC139-C05	0.5 ml concentrated

Summary and explanation

CD45, also known as leucocyte common antigen, is protein product of PTPRC, which is a member of the protein tyrosine phosphatase family. It was suggested that CD45 weighs a lot in type 1 interferon producing in dendritic cells. CD45 expression could be usually found in leucocytes, including granulocytes, lymphocytes, eosinophils, basophils (dim), monocytes, macrophages / histiocytes, mast cells and plasma cells.

Principle of the procedure

The stated primary antibody is suitable for immunohistochemical staining of FFPE tissue sections based on specific antigen-antibody reaction. Using a detection system linked to HRP or alkaline phosphatase the antigen visualization is performed via specific binding of the primary antibody. Secondary antibody is binding to the primary antibody, and the enzyme complex labels this complex. The enzymatic activation of the chromogen results in a visible reaction product at the antigen site. Each step is incubated for a precise time and temperature and requires interposed washing steps. The specimen may then be counterstained. Results are interpreted using a light microscope.

Materials provided

Primary antibody	CD45 (LCA)
Host	Mouse
Subclass	IgG

Clone	ISM145
Species Cross-reactivity	Human. Others-not known
Applications	Immunohistochemistry
Epitope Retrieval	Heat-induced epitope retrieval
Ready-to-use antibody	Prediluted antibody in antibody diluent buffer
Recommended working dilution range	1:50 to 1:100

Product label shows the specific lot number.

Prediluted antibody is ready-to-use and optimized for staining. No further dilution, reconstitution, mixing, or titration is needed.

Antibody concentrate is optimized for dilution within dilution range using InSituChem® Antibody Diluent for IHC (Cat. No. D005-50). Indicated dilution range should be considered as recommendation and depends on different facts (tissue, fixation, incubation conditions, etc.). Optimum dilution to be determined in user's own system.

Materials required but not provided

The following materials may be required for staining but are not provided with the primary antibody.

- Positive and negative controls
- Microscope slides (positively charged) and cover slips
- Water bath
- Humidified chamber
- Staining jars
- Stopwatch
- Xylene or xylene substitute
- Ethanol
- Deionized or distilled water
- Antigen retrieval reagent, e.g. Antigen Enhancer (HIER buffer), Cat. No. D004-500
- Detection system, e.g. IHC Complete Detection system (Goat anti mouse/rabbit HRP, DAB staining), Cat. No. D001-15
- Wash buffer: e.g. IHC Wash Buffer, Cat. No. D003-500
- Tap water/bleaching reagent (e.g. ammonia water)
- Light microscope

Storage and handling

Store at 2 - 8 °C.

When stored correctly antibody is stable to the expiration date indicated on the vial. Do not use after expiration date.

To ensure proper reagent delivery and stability of the antibody, replace the dispenser cap after every use and immediately place the bottle cool in an upright position.

Staining procedure

1. Cut 3-4 µm section of formalin-fixed paraffin-embedded tissue and place on positively charged slides.

2. Dry at 65°C for 2 hours.
3. Deparaffinize, rehydrate, and epitope retrieve. Upon completion, rinse with 3 changes of distilled or deionized water.
4. If using HRP detection system, place slides in peroxide block for 10 minutes; rinse. If using AP detection system, omit this step.
5. Apply the antibody and incubate for 60 minutes; rinse.
6. Apply the InSituVison™ Polymer Rabbit/Mouse Detection System for 30 minutes; rinse.
7. Apply ample amount of DAB or AEC chromogen and incubate; rinse.
8. Dehydrate and coverslip.

Interpretation of results

The immunostaining procedure causes a colored reaction product to precipitate at the antigen sites localized by the primary antibody.

Cellular localization: Cell membrane.

A qualified pathologist experienced in immunohistochemistry procedures must evaluate positive and negative tissue controls before interpreting patient specimens. Positive staining intensity should be assessed within the context of any background staining of the negative reagent control.

Note: A negative result means that the antigen in question was not detected, but not that the antigen is not present in the cells/tissues tested. An antibody panel may be used to support the results in some circumstances. Additionally, the morphology of each tissue sample should be examined utilizing a hematoxylin and eosin stained section. A qualified pathologist must interpret the patient's morphologic findings and pertinent clinical data.

Warnings and precautions

1. Application only by qualified and trained personnel.
2. There are no estimated health risks, if the product is used as directed. MSDS is available on request.
3. Product contains sodium azide as preservative. Pure sodium azide is toxic. The concentration of sodium azide in this reagent is < 0.1 % and is not classified hazardous. See MSDS.
4. As with any product derived from biological sources, proper handling procedures should be used.
5. Do not use reagents after expiration date.
6. Take reasonable precautions when handling reagents. Use protective clothing and gloves.
7. All hazardous materials should be disposed according to guidelines for hazardous waste disposal. Materials of human or animal origin should be handled as biohazardous materials and disposed of with proper precautions.
8. Avoid microbial contamination of reagents as it may cause incorrect results.

Literature

[1] Yunqi Li and others, Upregulation of PTPRC and Interferon Response Pathways in HIV-1 Seroconverters Prior to Infection, The Journal of Infectious Diseases, Volume 227, Issue 5, 1 March 2023, Pages 714–719

[2] Catia Marozzi and others, A monoclonal antibody for the CD45 receptor in the teleost fish Dicentrarchus labrax, Developmental & Comparative Immunology, Volume 37, Issues 3–4, 2012, Pages 342–353

Date of publication or revision

2024-06-10

Change(s) made: -

Explanation of symbols



Catalog number



Batch code



Use by



Temperature limitation



Do not use if package damaged



Consult instructions for use



Caution